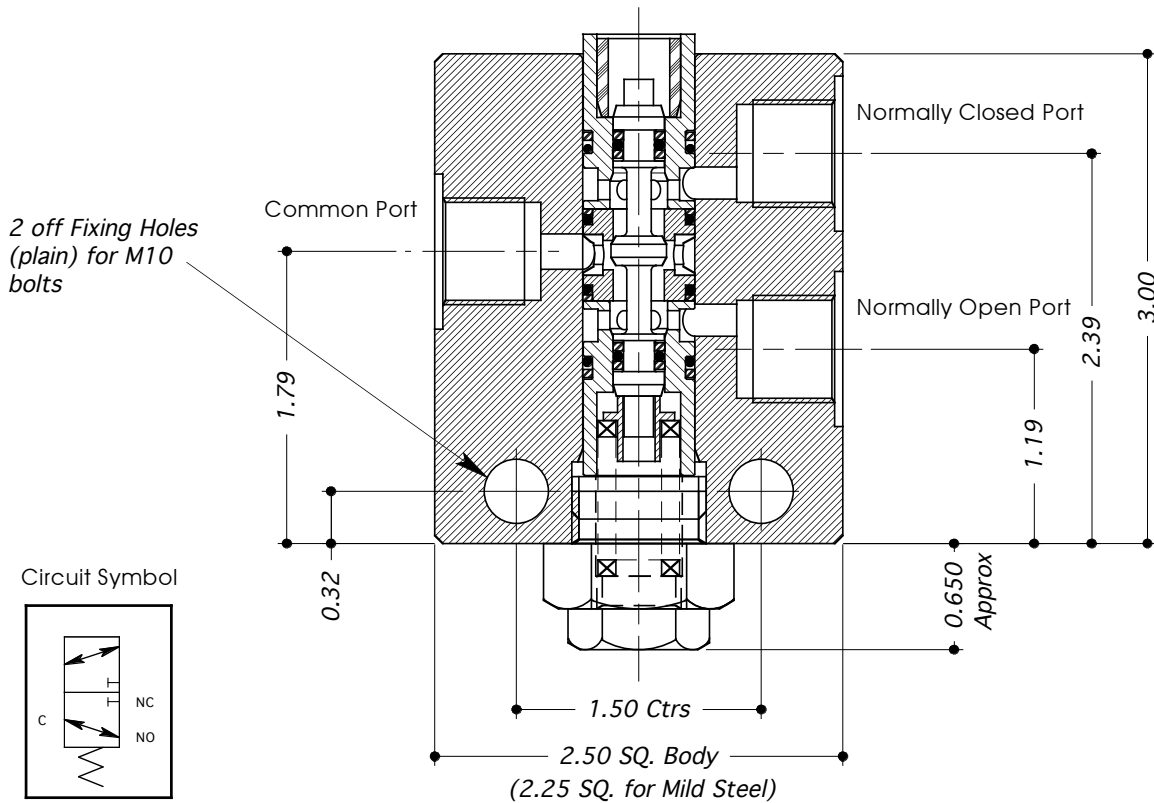


DIRECTIONAL CONTROL VALVE TYPE: 3B37



- 2 POSN / 3 PORTED MILD STEEL - ENP (EN1A / 220M07) VALVE WITH ACTUATOR OPTIONS.
- BODY MATERIAL OPTIONS: STAINLESS STEEL (316 / 1.4404), ALUM. ALLOY (HE30)
- SUITABLE FOR LIQUID USE.
- FITTED WITH "HARD" SEATS.
- ACTUATION TYPE - SEE SECTION 12 FOR DETAILS.
- ALL DIMENSIONS IN INCHES.



TECHNICAL SPECIFICATION		ORDERING EXAMPLE
Material Option (non-std)	A = Alum. Body (HE30) S = Stainless Steel (316/1.4404)	—
Valve Type:	3B37	3B37
Porting / Connection Options:	P = BSP (Parallel) N = NPT (Taper)	P
Actuator Options	Low Press. Pilot: Types: H3 (44 to 300 psi)	H3
	High Press. Pilot: Types: H0 (400 to 3,500 psi), H1 (1,400 to 10,000 psi)	
	Mechanical: Types: C0, C1, L, DL	
Max. Working Press: Liquid	10,000 psi	10K
Port Size:	3/8"	
Valve Seat Mat'l: Liquid	Stainless Steel - 431/1.4057	
Seal Material:	Viton (other materials available by request)	
CV Value:	0.44	
Dry Weight: (kg)	2.0	
Working Temperature Range:	-10°C to +120°C	